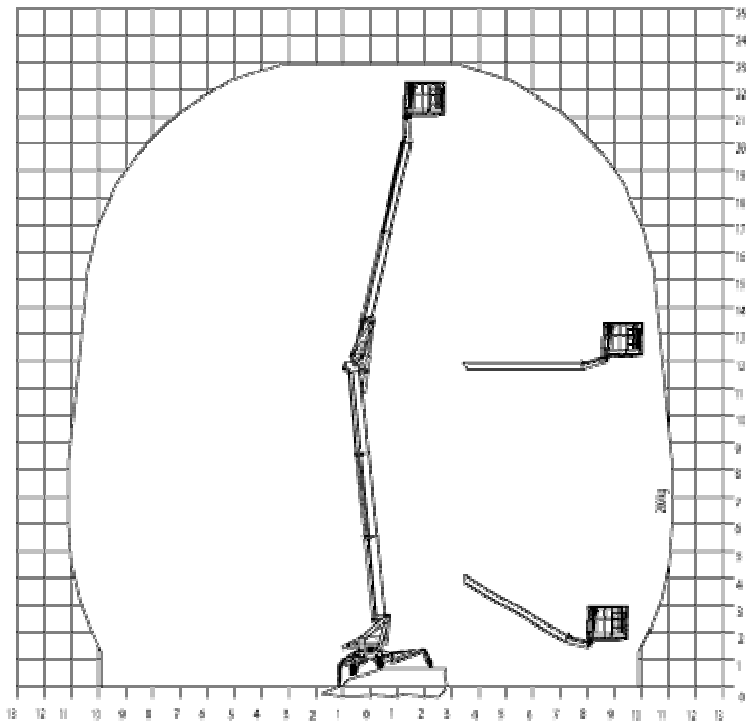
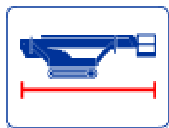


# Technical Information



Working height: 23 m ([Download Technical data](#))

All measurements are rounded.  
We reserve the right to make technical alterations.



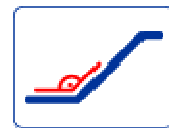
6,20 m



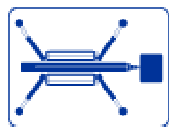
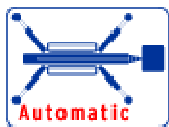
3100 kg



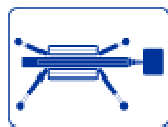
16,7930 %



15,5727 %



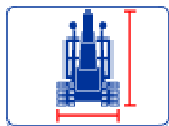
4,65 m/4,3 m



3,65 m/3,4 m



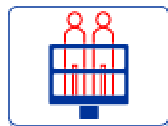
2,65 m/2,5 m



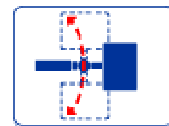
0,98 m/1,97 m



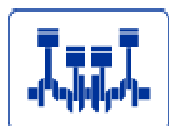
23 cm/45 cm



200 kg



180°



230 V



3,4 kN/m<sup>2</sup>



1,9 kN/m<sup>2</sup>